



US00D933258S

(12) **United States Design Patent**
Phagura et al.

(10) **Patent No.:** **US D933,258 S**

(45) **Date of Patent:** **** Oct. 12, 2021**

(54) **TRAILER DOOR WITH DISPLAY**

D418,229 S * 12/1999 Mangelsen D25/138
6,655,108 B2* 12/2003 Larson E05B 9/08

(71) Applicants: **Ranjit Singh Phagura**, Rocklin, CA
(US); **Sandeep Kaur Uppal**, Rocklin,
CA (US)

6,688,063 B1* 2/2004 Lee E05B 9/08
292/1

(72) Inventors: **Ranjit Singh Phagura**, Rocklin, CA
(US); **Sandeep Kaur Uppal**, Rocklin,
CA (US)

D805,216 S * 12/2017 Davis D25/58
D863,596 S * 10/2019 Staton D25/48.3
D912,275 S * 3/2021 Phagura D25/48.3
D918,423 S * 5/2021 Staton D25/48.3
2020/0270933 A1* 8/2020 Gouge E06B 3/72

(**) Term: **15 Years**

* cited by examiner

(21) Appl. No.: **29/754,224**

Primary Examiner — Leanne Was-Englehart

(74) *Attorney, Agent, or Firm* — Craig A. Simmermon

(22) Filed: **Oct. 8, 2020**

(57) **CLAIM**

Related U.S. Application Data

We claim the ornamental design for a trailer door with display, as shown and described.

(62) Division of application No. 29/698,062, filed on Jul. 13, 2019, now Pat. No. Des. 912,275.

DESCRIPTION

(51) **LOC (13) Cl.** **25-02**

FIG. 1 is a perspective view of a trailer door with display showing my new design;

(52) **U.S. Cl.** **D25/48.3**

FIG. 2 is a front elevation view thereof;

USPC **D25/48.3**

FIG. 3 is a rear elevation view thereof;

(58) **Field of Classification Search**

FIG. 4 is a left side elevation view thereof;

USPC D12/100, 103, 106, 196; D25/48.1, 48.3,

FIG. 5 is a right side elevation view thereof;

D25/60

FIG. 6 is a top plan view thereof;

CPC E06B 3/44; E06B 3/4423; E06B 5/003;

FIG. 7 is a bottom plan view thereof;

E06B 2003/4453; E06B 2003/4492

FIG. 8 is a perspective view of a second embodiment of a trailer door with display showing my new design;

See application file for complete search history.

FIG. 9 is a front elevation view thereof;

(56) **References Cited**

U.S. PATENT DOCUMENTS

2,914,121 A * 11/1959 Taylor E06B 3/4423
160/37

FIG. 10 is a rear elevation view thereof;

D218,809 S * 9/1970 Horgan D25/48.3

FIG. 11 is a left side elevation view thereof;

D224,589 S * 8/1972 Chow D12/103

FIG. 12 is a right side elevation view thereof;

D295,734 S * 5/1988 Barber D12/103

FIG. 13 is a top plan view thereof; and,

D305,067 S * 12/1989 Borgen D25/48.3

FIG. 14 is a bottom plan view thereof.

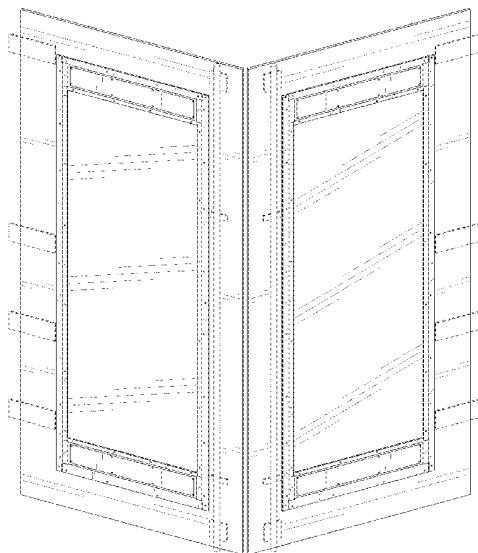
D326,528 S * 5/1992 Klein D25/48.3

The broken lines depict environmental subject matter that forms no part of the claimed design.

D392,921 S * 3/1998 McCloud D12/103

D396,300 S * 7/1998 Grimaldi D25/48.3

1 Claim, 10 Drawing Sheets



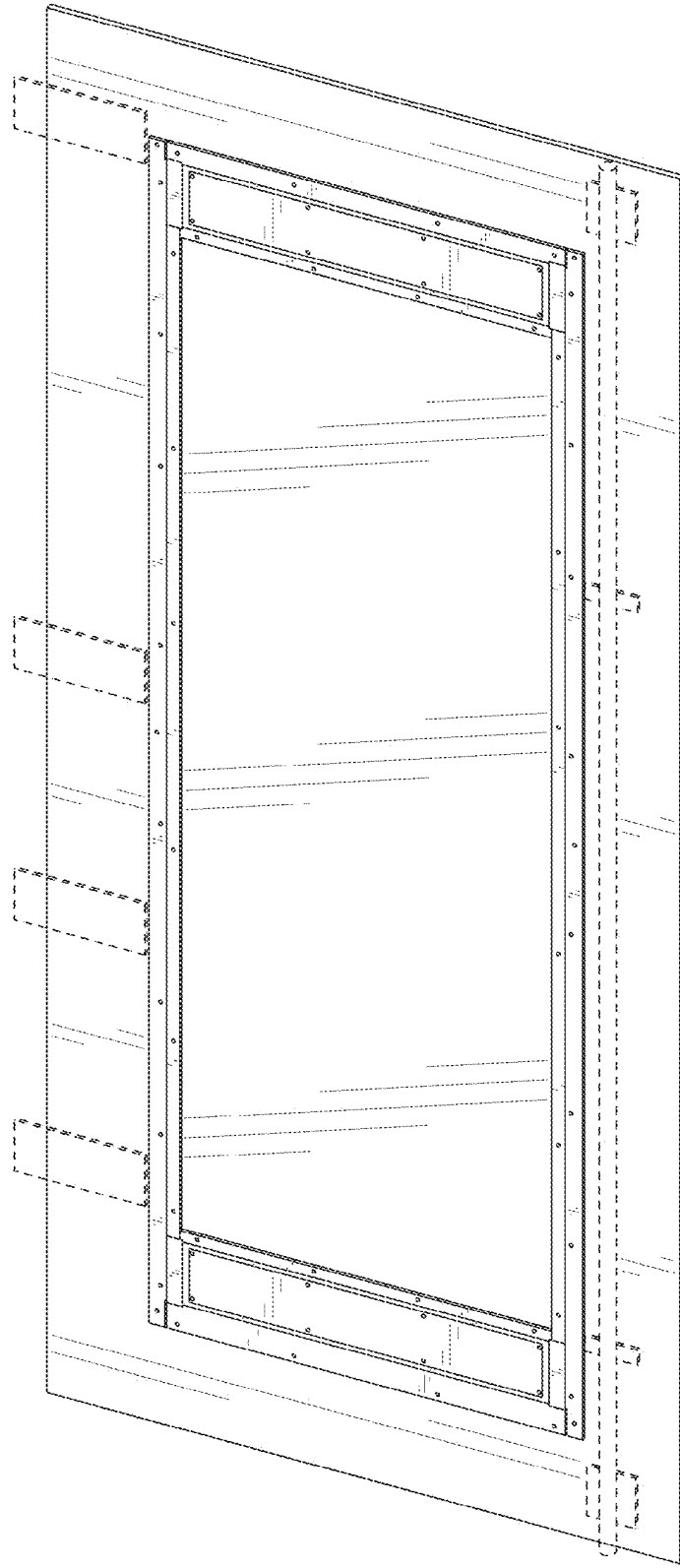


FIG. 1

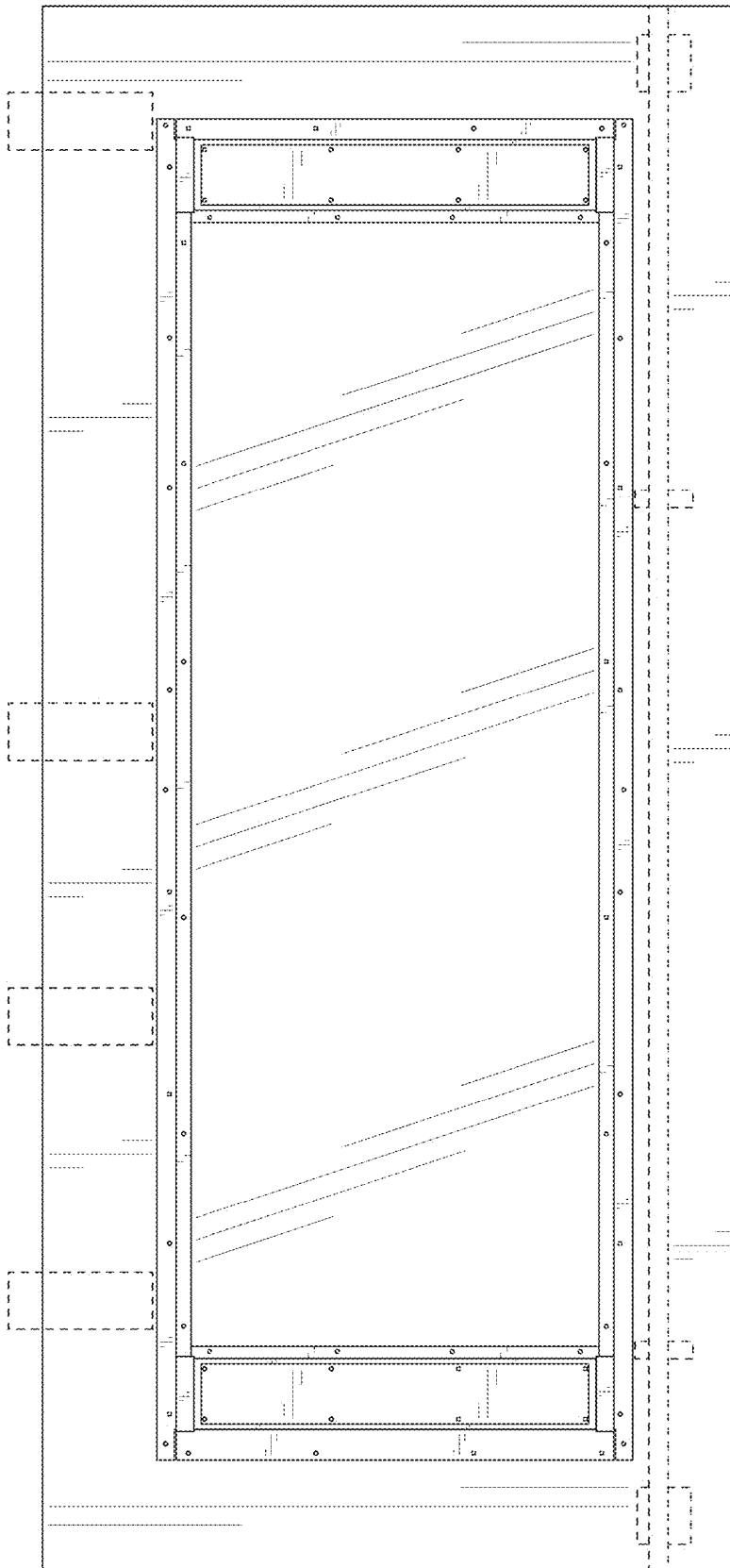


FIG. 2

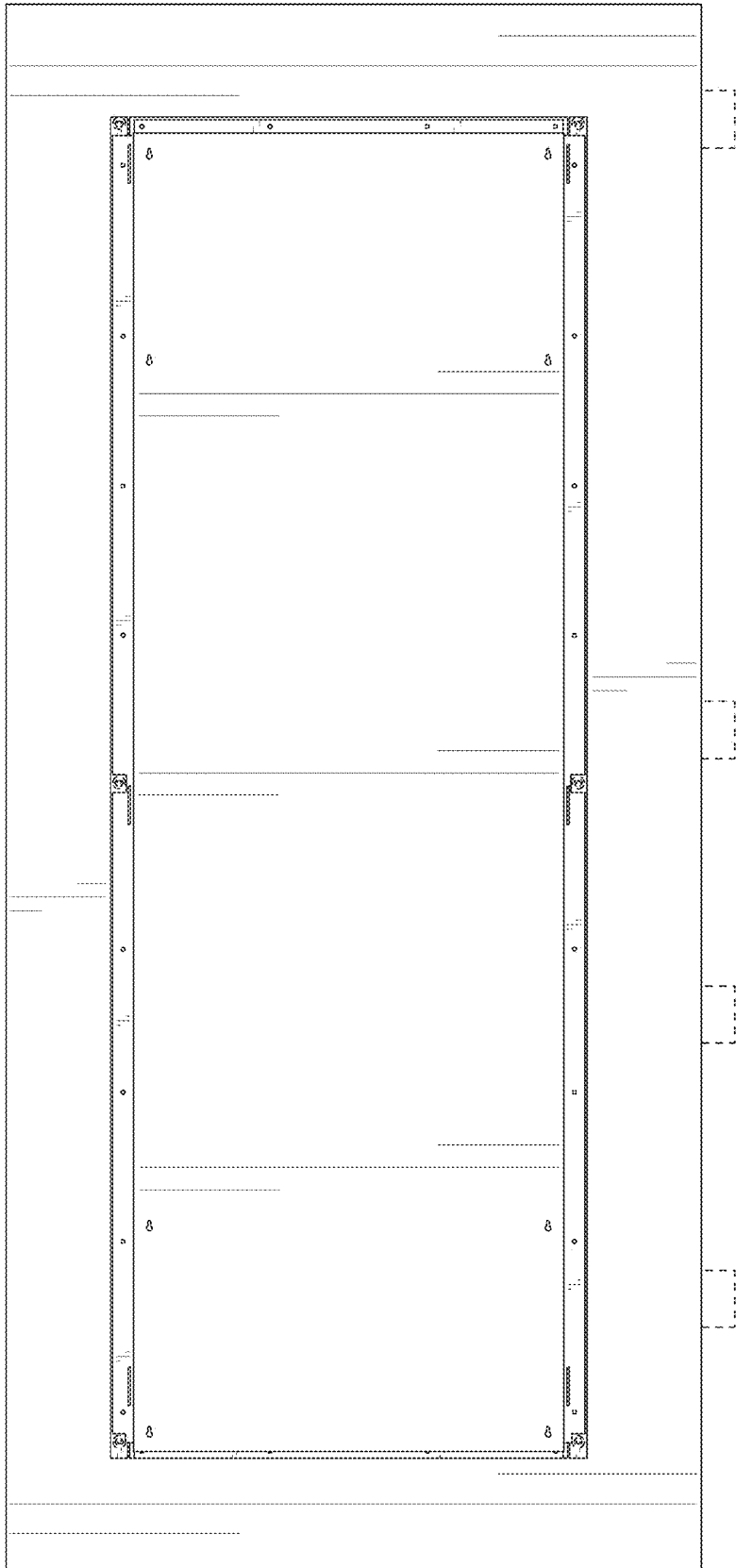


FIG. 3

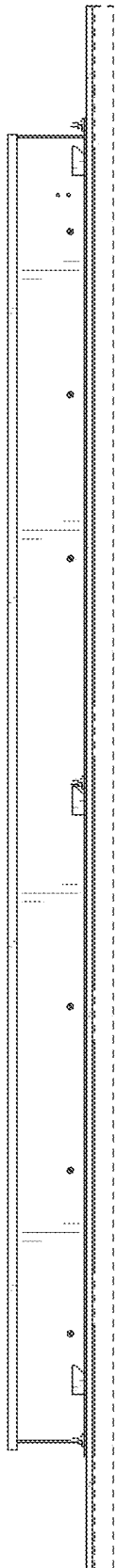


FIG. 4



FIG. 5

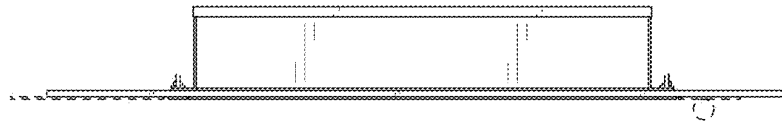


FIG. 6

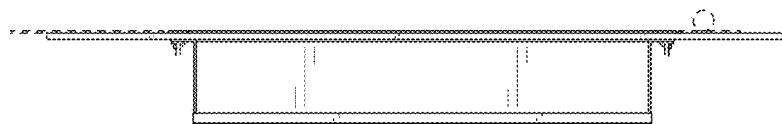


FIG. 7

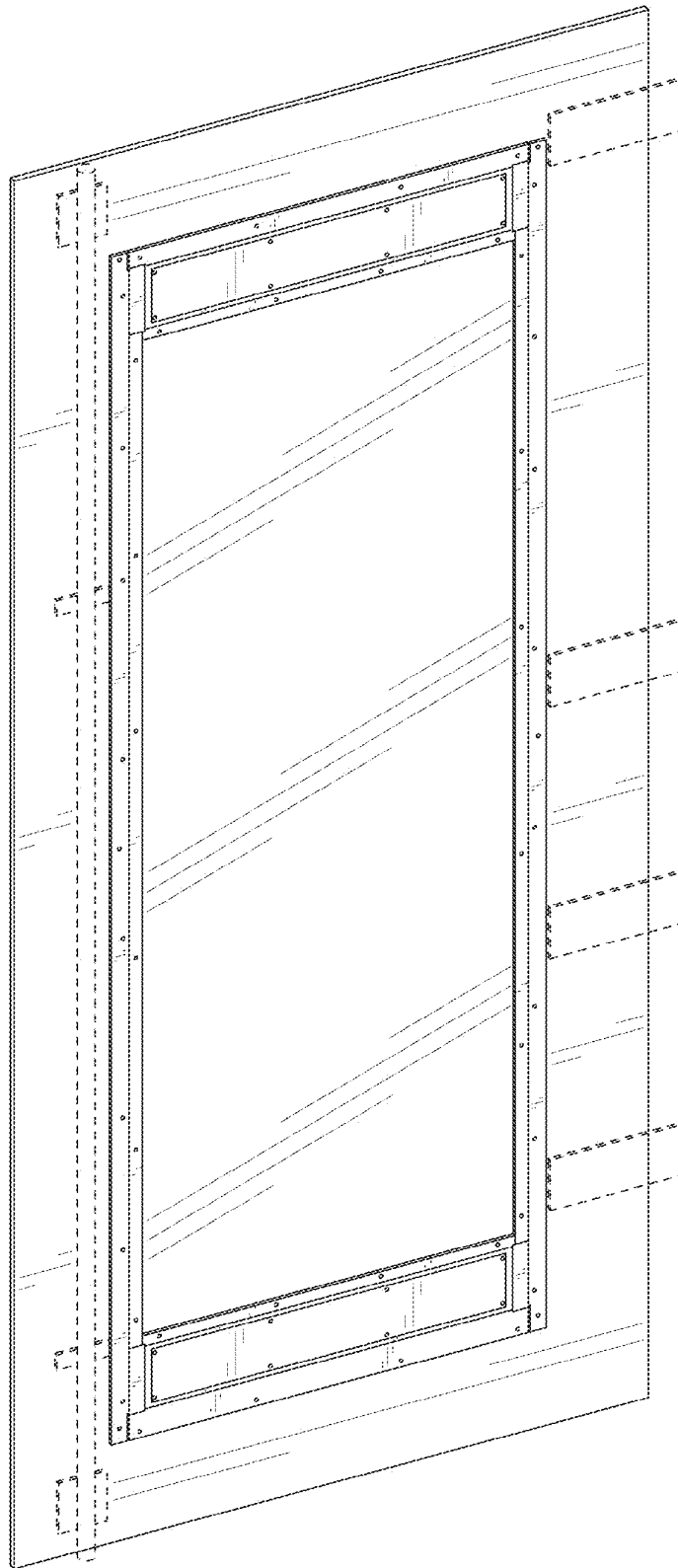


FIG. 8

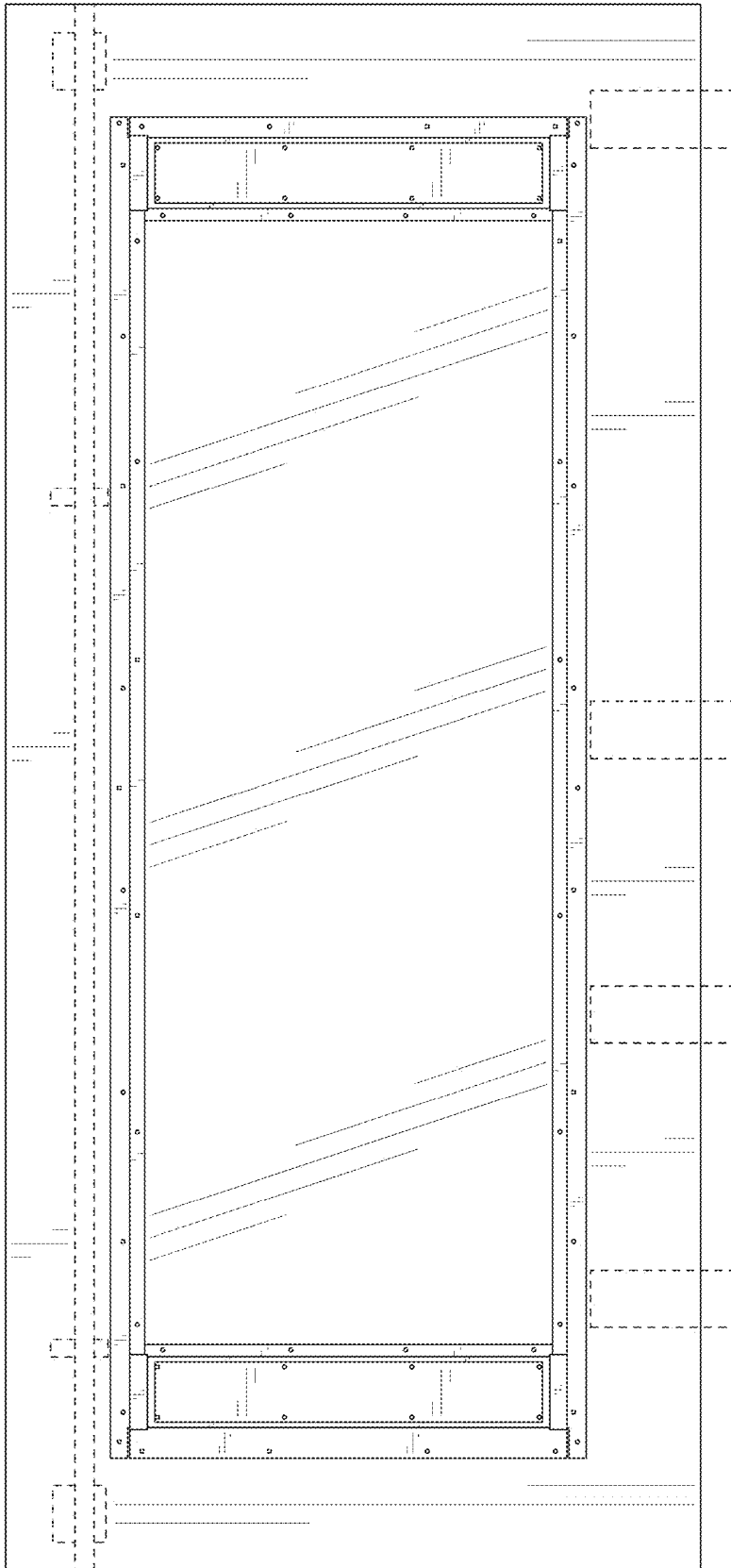


FIG. 9

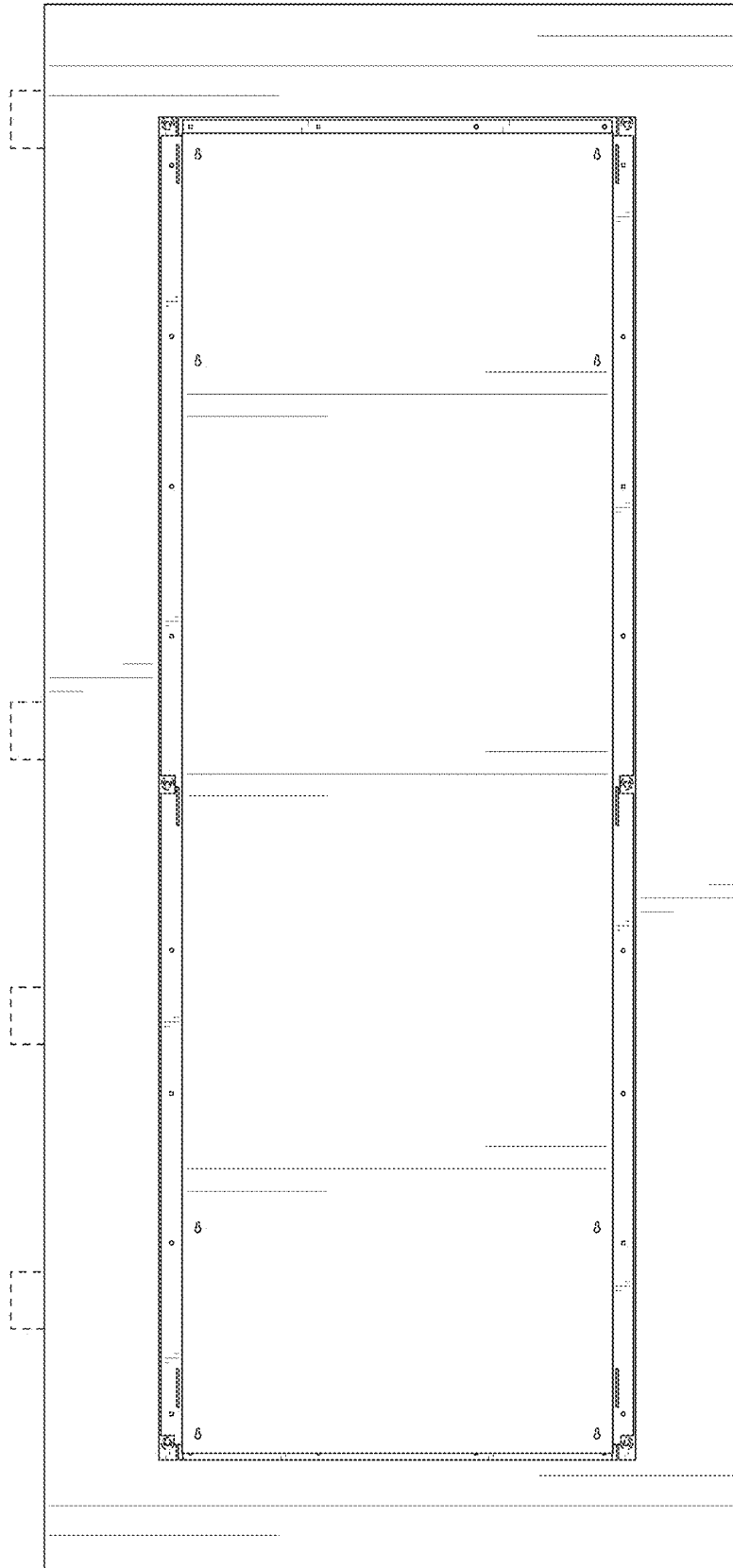


FIG. 10

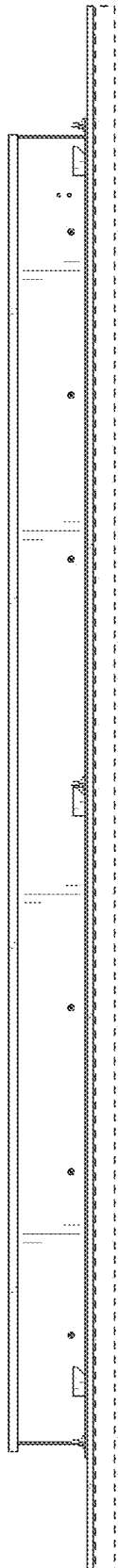


FIG. 11

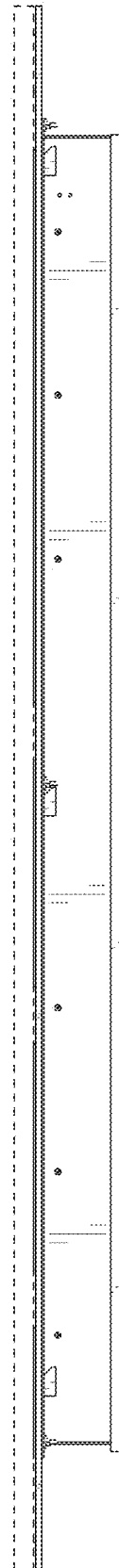


FIG. 12

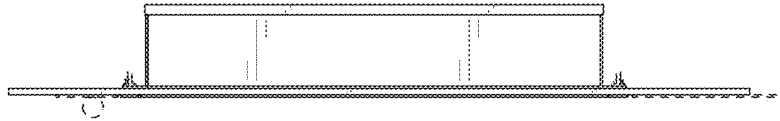


FIG. 13

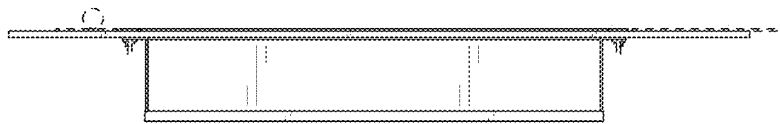


FIG. 14