



US00D641392S

(12) **United States Design Patent**
Clark et al.

(10) **Patent No.:** **US D641,392 S**
(45) **Date of Patent:** **** Jul. 12, 2011**

(54) **DAMPER LEVER FLANGE FOR GRAND PIANO**

Primary Examiner — Ian Simmons

Assistant Examiner — Charles D Hanson

(74) *Attorney, Agent, or Firm* — Craig A. Simmermon

(76) Inventors: **Bruce E. Clark**, Nottingham, NH (US);
Kirk Burgett, Sacramento, CA (US)

(**) Term: **14 Years**

(57) **CLAIM**

The ornamental design for damper lever flange for grand piano, as shown and described.

(21) Appl. No.: **29/339,991**

(22) Filed: **Jul. 10, 2009**

DESCRIPTION

(51) **LOC (9) Cl.** **17-02**

(52) **U.S. Cl.** **D17/9**

(58) **Field of Classification Search** D17/1,
D17/7, 9, 12, 13, 14, 20, 10, 18, 99; 84/13,
84/27, 29, 30, 33, 34, 40, 174, 377, DIG. 14,
84/379, 384, 216; 984/51, 52, 101, 113,
984/114

See application file for complete search history.

FIG. 1 is a front view of damper lever flange for grand piano.
FIG. 2 is a right side view of damper lever flange for grand piano.

FIG. 3 is a left side view of damper lever flange for grand piano.

FIG. 4 is a top view of damper lever flange for grand piano.
FIG. 5 is a bottom view of damper lever flange for grand piano.

FIG. 6 is an additional front view defining cross sectional planes 7—7 and 8—8;

FIG. 7 is a cross section view thereof, taken a long line 7—7;

FIG. 8 is a cross section view thereof, taken along line 8—8;

FIG. 9 is a top view defining cross sectional plane 10.

FIG. 10 is a cross section view thereof, taken along line 10—10; and,

FIG. 11 is a rear view of damper lever flange for grand piano.

The broken lines are included for the purpose of defining cross section planes and forms no part of the claimed design.

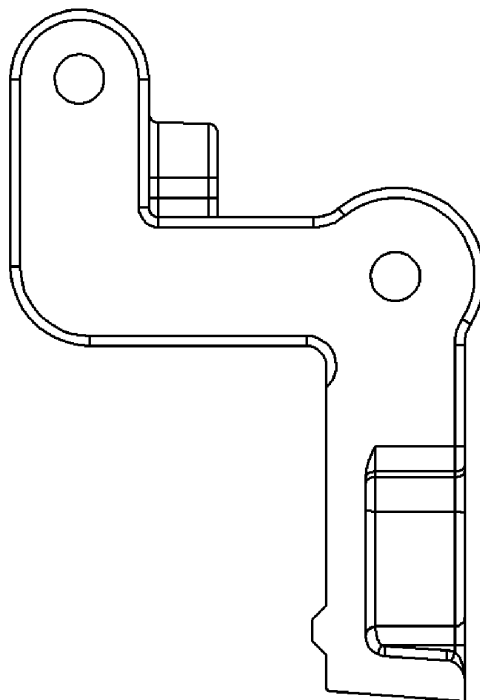
(56) **References Cited**

U.S. PATENT DOCUMENTS

3,262,195	A *	7/1966	Andersen et al.	29/411
D309,347	S *	7/1990	Brown	D23/386
5,932,820	A *	8/1999	Kihara	84/216
6,020,544	A *	2/2000	Jones et al.	84/218
6,348,645	B1 *	2/2002	Yamashita	84/217
6,632,988	B1 *	10/2003	Jones et al.	84/216
D499,755	S *	12/2004	Ohno	D17/7
7,807,907	B2 *	10/2010	Inoue	84/243

* cited by examiner

1 Claim, 3 Drawing Sheets



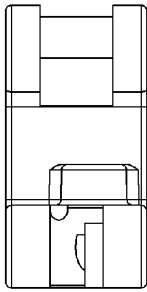


Fig. 4

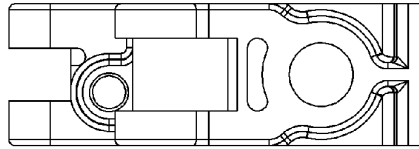


Fig. 2

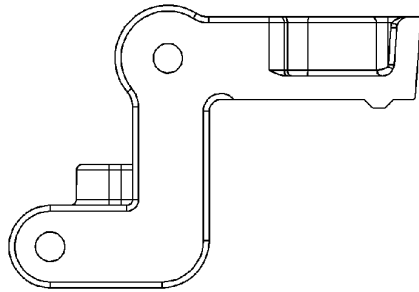


Fig. 1

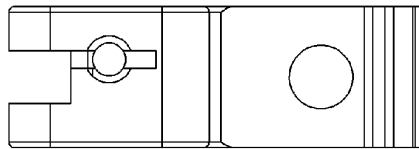


Fig. 3

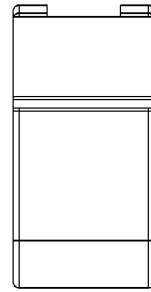


Fig. 5

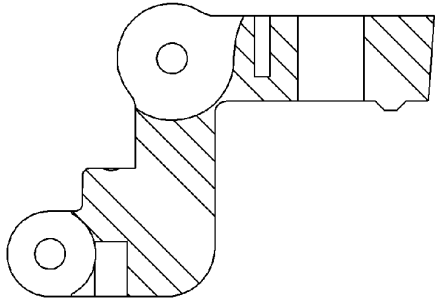


Fig. 10

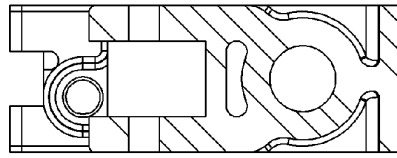


Fig. 8

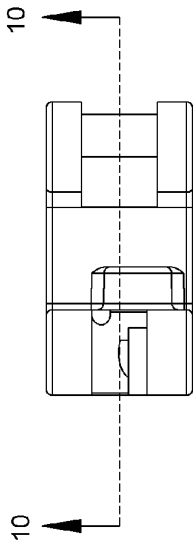


Fig. 9

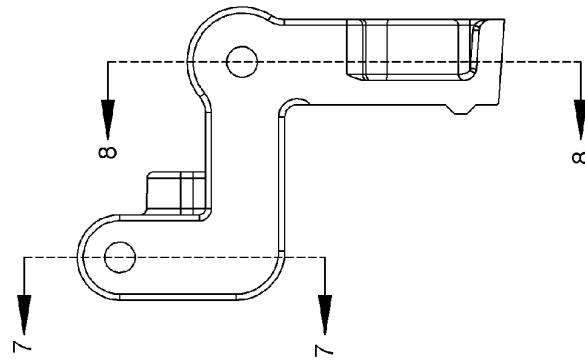


Fig. 6

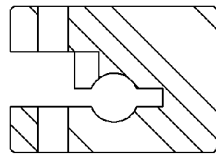


Fig. 7

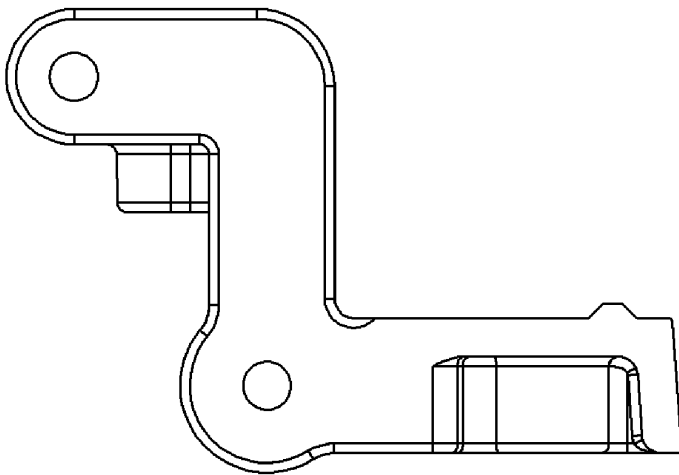


Fig. 11