



US00D912275S

(12) **United States Design Patent**  
**Phagura et al.**

(10) **Patent No.:** **US D912,275 S**  
(45) **Date of Patent:** **\*\* Mar. 2, 2021**

(54) **TRAILER DOOR WITH DISPLAY**

FOREIGN PATENT DOCUMENTS

(71) Applicants: **Ranjit Singh Phagura**, Rocklin, CA (US); **Sandeep Kaur Uppal**, Rocklin, CA (US)

JP D1175070 \* 6/2003

(72) Inventors: **Ranjit Singh Phagura**, Rocklin, CA (US); **Sandeep Kaur Uppal**, Rocklin, CA (US)

OTHER PUBLICATIONS

The Safety Truck Could Revolutionize Road Safety Samsung Global Newsroom <https://news.samsung.com/global/the-safety-truck-could-revolutionize-road-safety> Posted Jun. 18, 2015 (Year: 2015).\*

(\*\*) Term: **15 Years**

\* cited by examiner

(21) Appl. No.: **29/698,062**

*Primary Examiner* — Leanne Was-Englehart

(22) Filed: **Jul. 13, 2019**

(74) *Attorney, Agent, or Firm* — Craig A. Simmermon

(51) **LOC (13) Cl.** ..... **25-02**

(52) **U.S. Cl.**  
USPC ..... **D25/48.3**

(58) **Field of Classification Search**  
USPC .... D12/100, 103, 106, 196; D25/48.1, 48.3, D25/60  
CPC ..... E06B 3/44; E06B 3/4423; E06B 5/003; E06B 2003/4453; E06B 2003/4492

See application file for complete search history.

(57) **CLAIM**

We claim the ornamental design for a trailer door with display, as shown and described.

**DESCRIPTION**

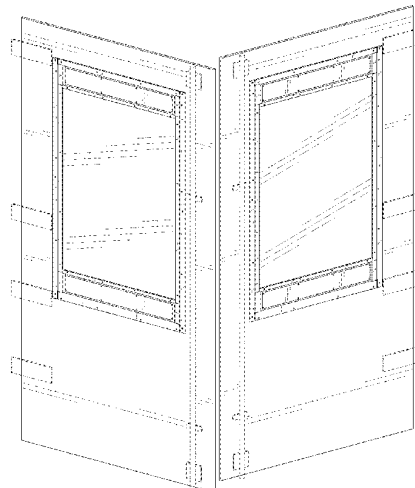
FIG. 1 is a perspective view of a trailer door with display showing my new design;  
FIG. 2 is a front elevation view thereof;  
FIG. 3 is a rear elevation view thereof;  
FIG. 4 is a left side elevation view thereof;  
FIG. 5 is a right side elevation view thereof;  
FIG. 6 is a top plan view thereof;  
FIG. 7 is a bottom plan view thereof;  
FIG. 8 is a perspective view of a second embodiment of a trailer door with display showing my new design;  
FIG. 9 is a front elevation view thereof;  
FIG. 10 is a rear elevation view thereof;  
FIG. 11 is a left side elevation view thereof;  
FIG. 12 is a right side elevation view thereof;  
FIG. 13 is a top plan view thereof; and,  
FIG. 14 is a bottom plan view thereof.  
The broken lines depict environmental subject matter that forms no part of the claimed design.

(56) **References Cited**

U.S. PATENT DOCUMENTS

2,914,121	A	*	11/1959	Taylor	.....	E06B 3/4423
						160/37
D218,809	S	*	9/1970	Horgan, Jr.	.....	D25/48.3
D224,589	S	*	8/1972	Chow	.....	D12/103
D295,734	S	*	5/1988	Barber	.....	D12/103
D305,067	S	*	12/1989	Borgen	.....	D25/48.3
D326,528	S	*	5/1992	Klein	.....	D25/48.3
D392,921	S	*	3/1998	McCloud	.....	D12/103
D396,300	S	*	7/1998	Grimaldi	.....	D25/48.3
D418,229	S	*	12/1999	Mangelsen	.....	D25/138
6,655,108	B2	*	12/2003	Larson	.....	E05B 9/08
						292/1
6,688,063	B1	*	2/2004	Lee	.....	E05B 9/08
						49/501
D805,216	S	*	12/2017	Davis	.....	D25/58
D863,596	S	*	10/2019	Staton	.....	D25/48.3
2020/0270933	A1	*	8/2020	Gouge	.....	E06B 3/70

**1 Claim, 10 Drawing Sheets**



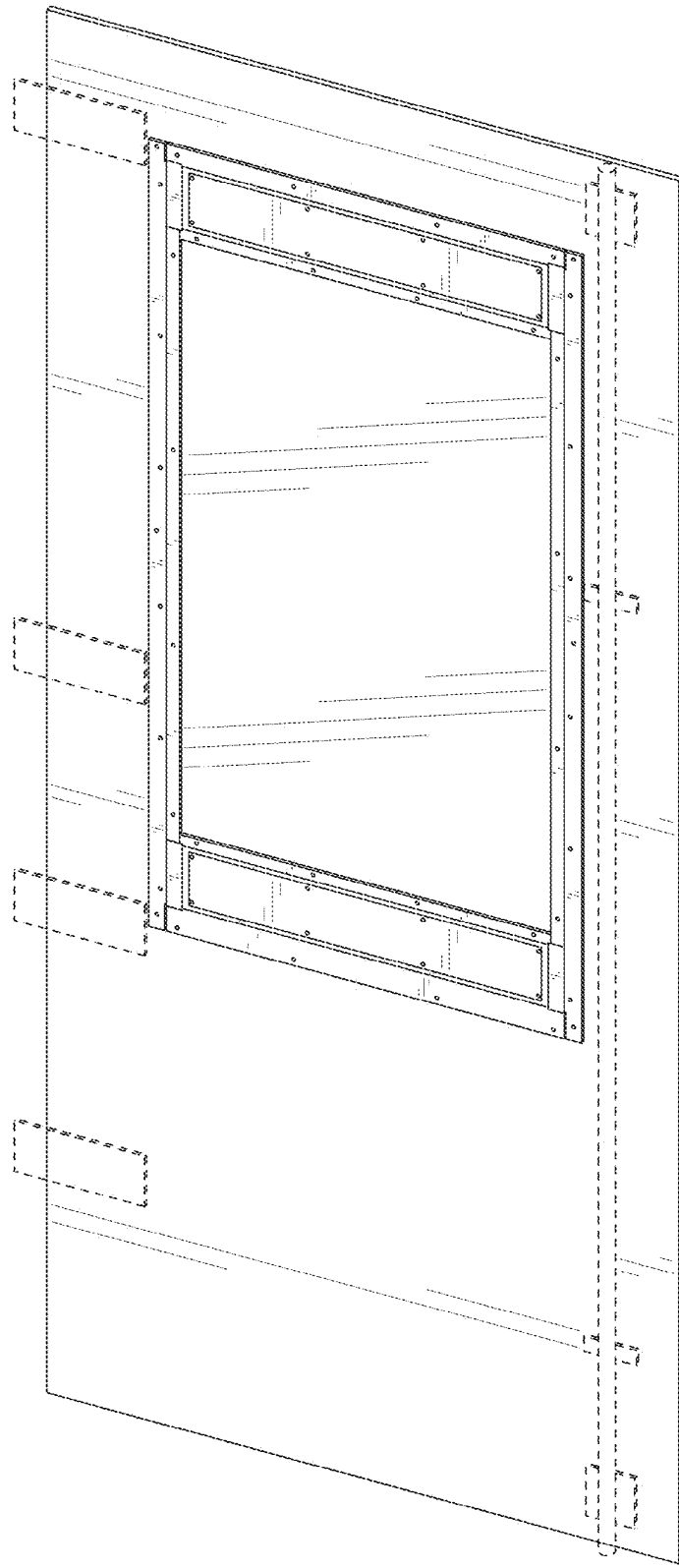


FIG. 1

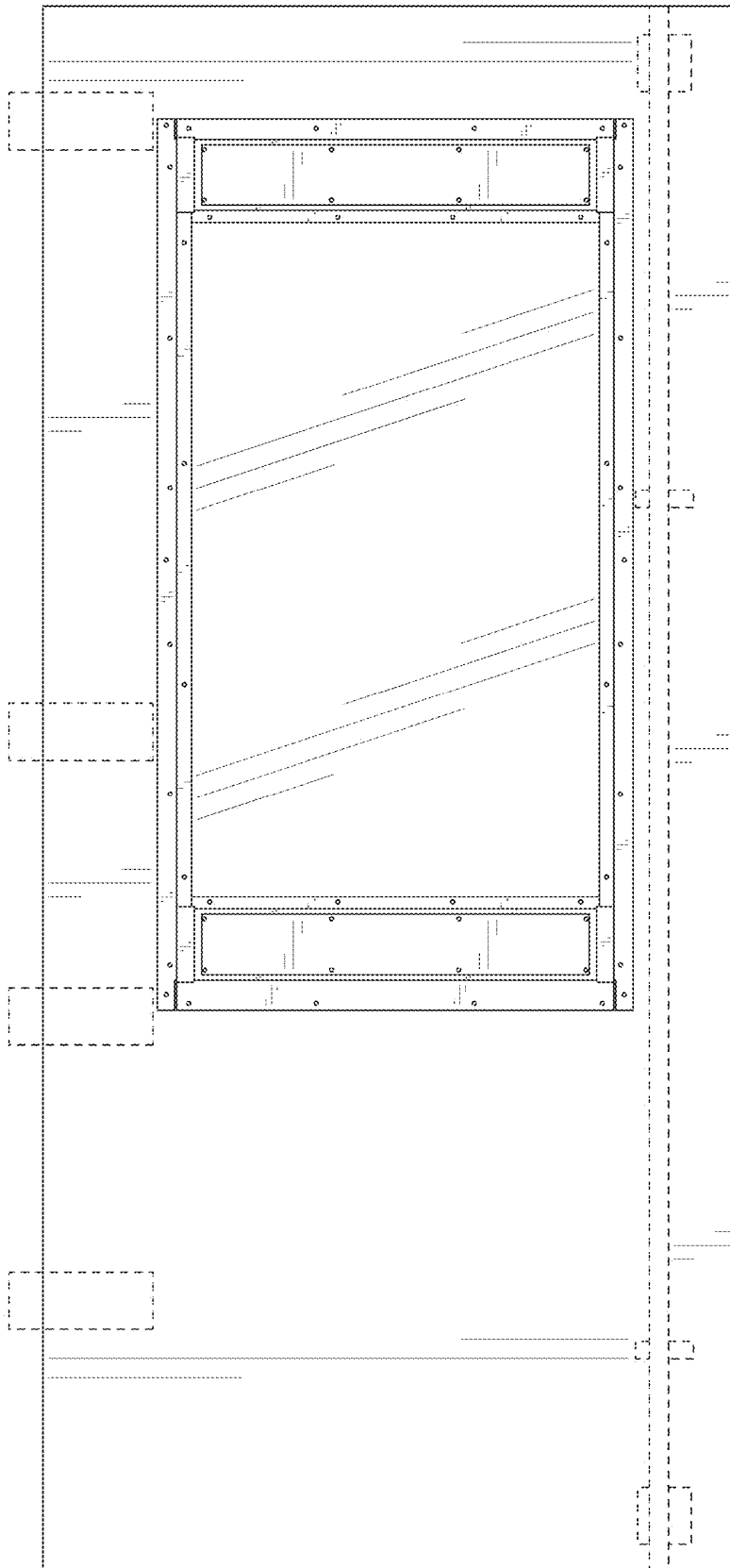


FIG. 2

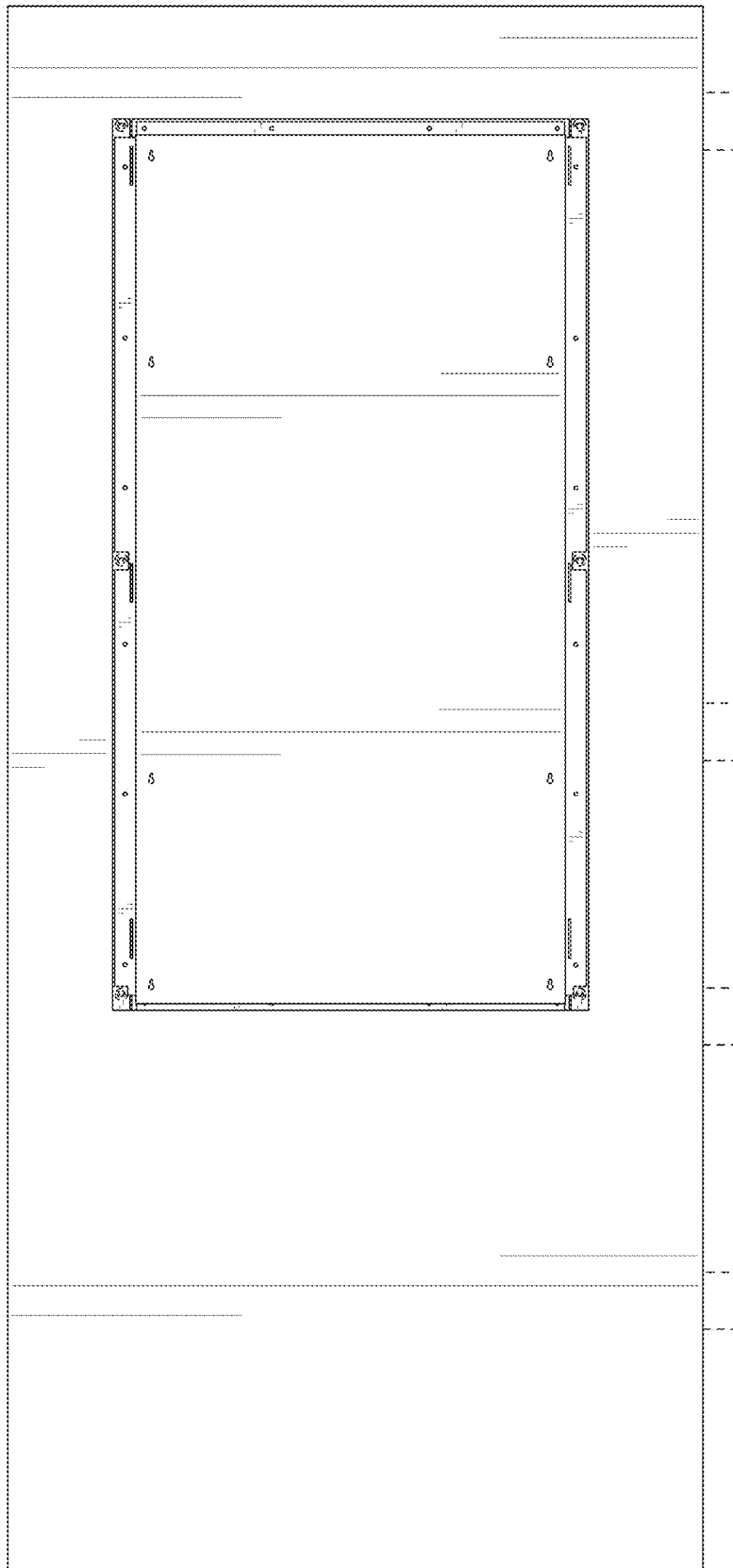


FIG. 3

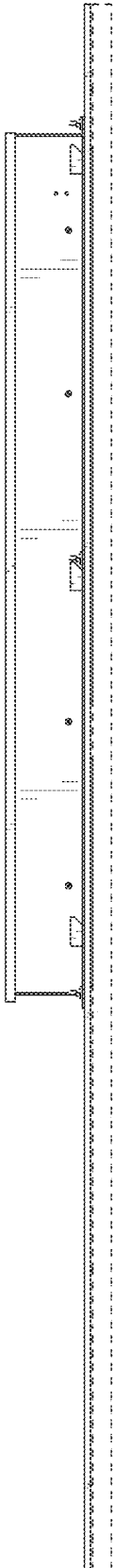


FIG. 4

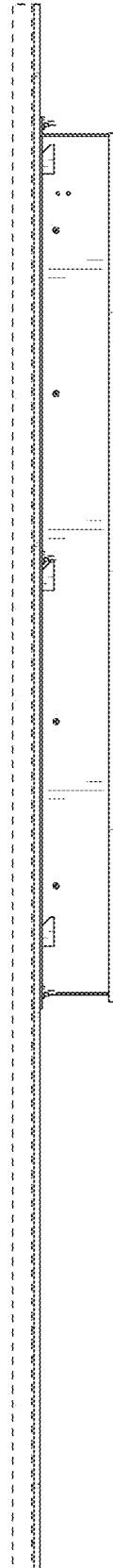


FIG. 5

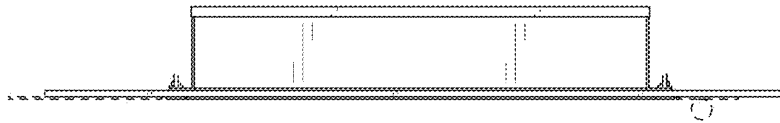


FIG. 6

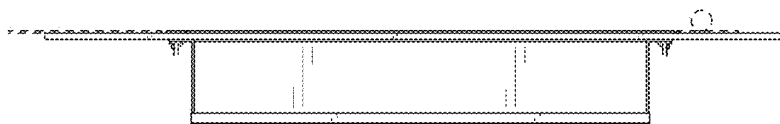


FIG. 7

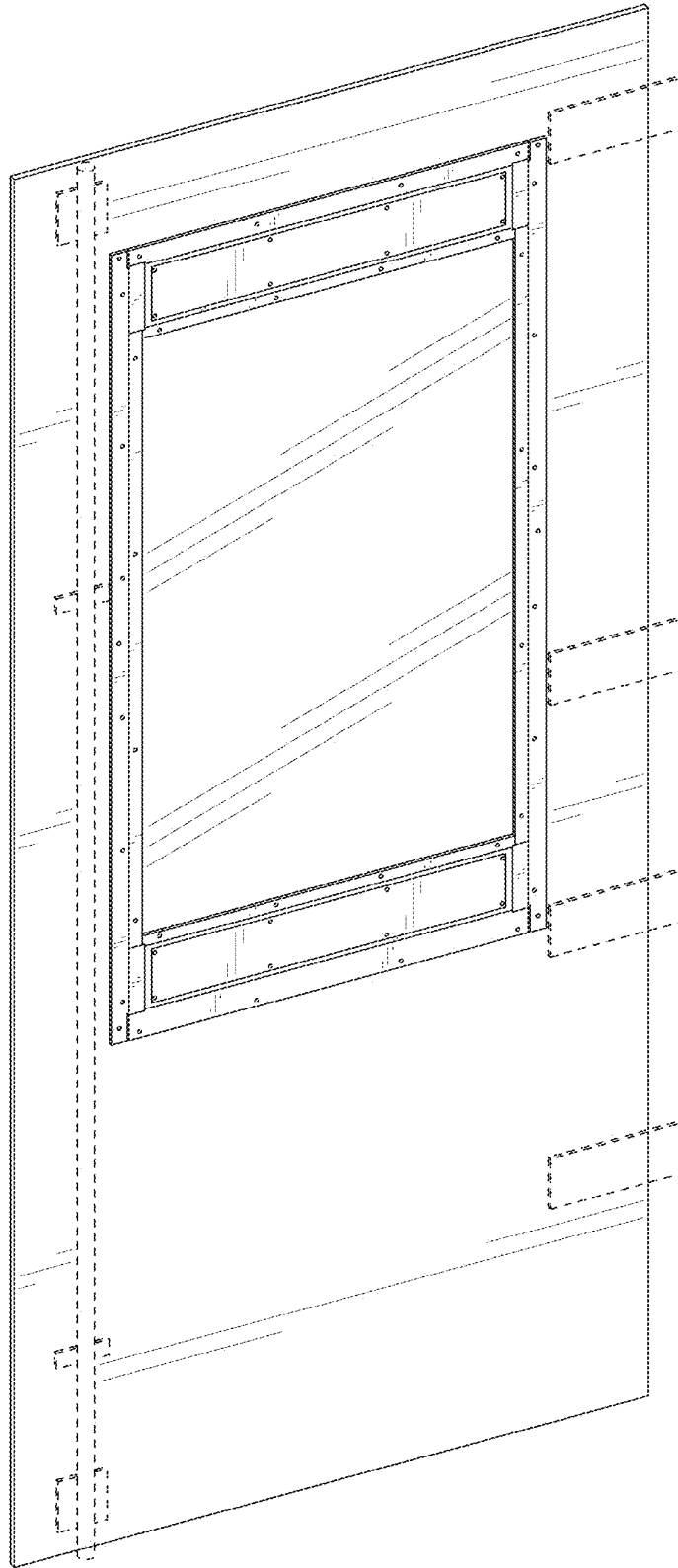


FIG. 8

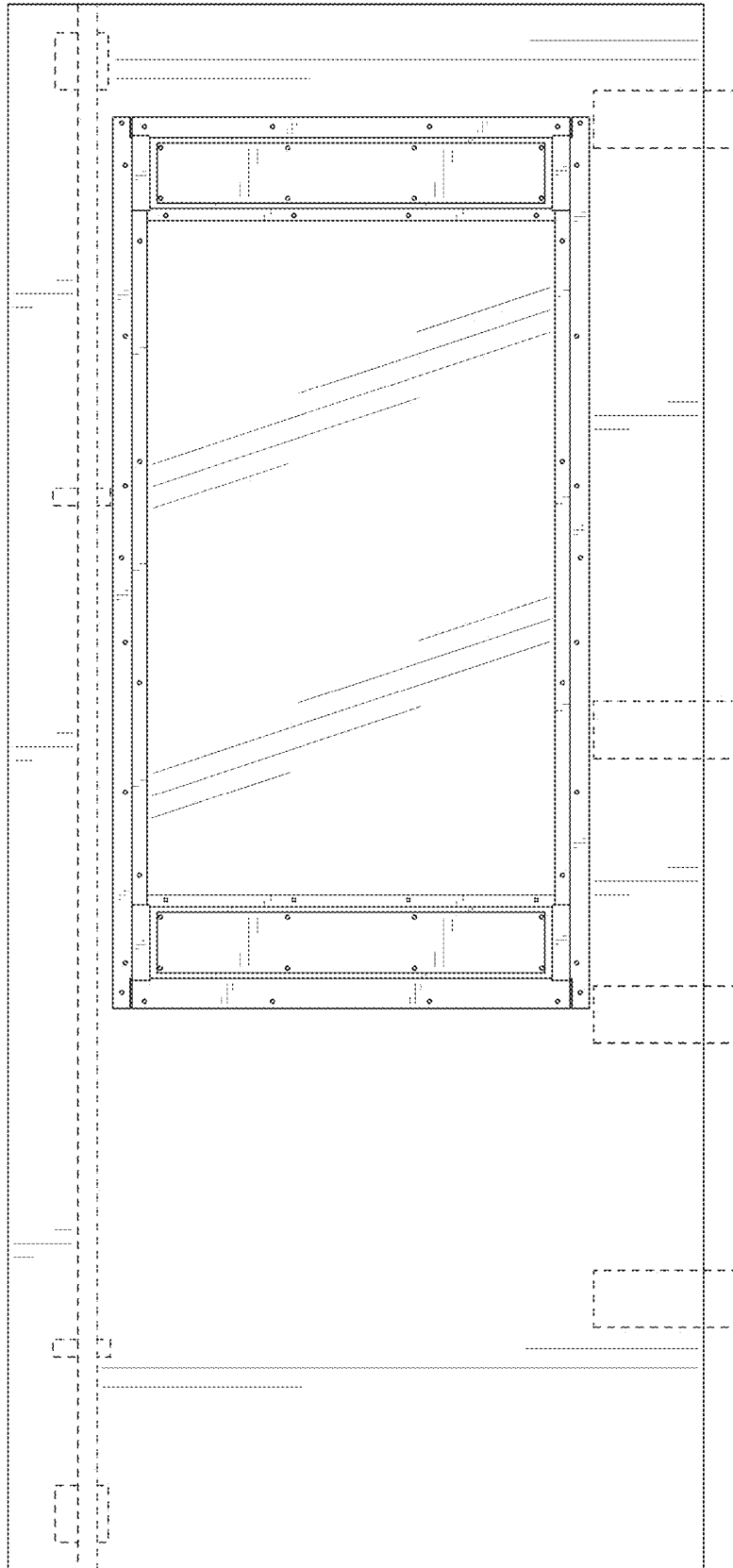


FIG. 9



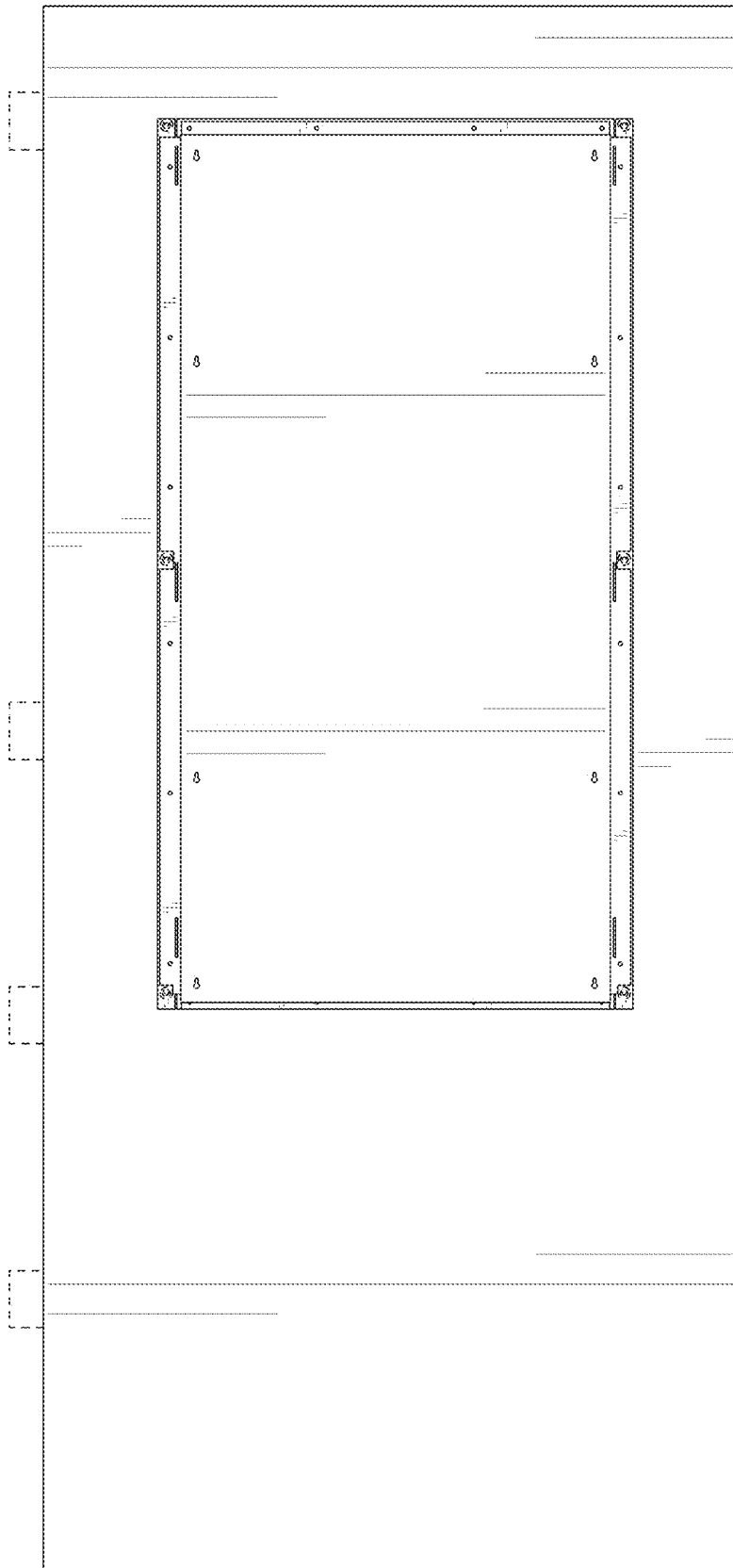


FIG. 10



FIG. 11

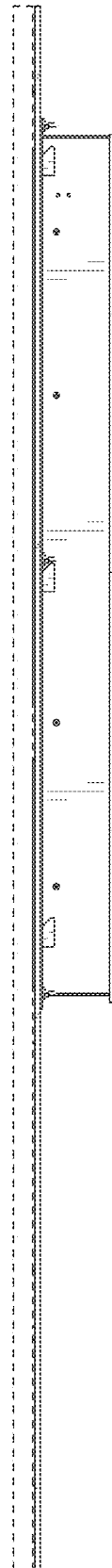


FIG. 12

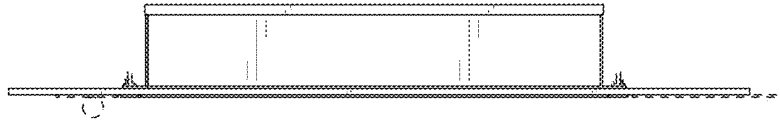


FIG. 13

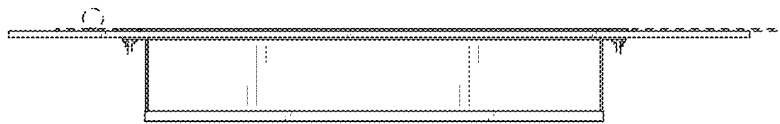


FIG. 14